

# WebDT Signage Appliance

## SA1000/ SA2000



### Key Features:

- Microsoft® Windows® XP Embedded operating system
- Intuitive, web-based remote content and device administration
- Compact size for ease in installation and mounting
- Fan or Fanless, HDD or Flashed based storage
- Optional wireless networking
- Support for numerous media formats (e.g., images, videos, Flash, URL, RSS, PowerPoint)
- Real-time or scheduled content playback
- Flexible screen layout options with multiple zones and layers
- Automatic content download recovery

The WebDT Signage Appliance by DT Research enables efficient deployment of a digital signage system. The reliable hardware together with an innovative server software suite, facilitates the creation of a unique and powerful communications medium that offers unparalleled opportunities to capture an audience's attention at key decision-making locations. When connected to a display, the WebDT Signage Appliances are ready to deliver timely, targeted communications, to the right place, at the right time.

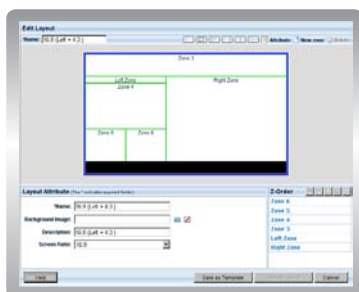
The WebDT Signage Appliances feature powerful and high-performance processors in compact and robust packages. The WebDT Signage Appliances power displays with dynamic content while communicating with the server for continuous updates. With VGA and HDMI outputs, the network-ready WebDT Signage Appliances offer efficient and flexible deployments.

### WebDT Content Manager

The web-enabled WebDT Content Manager software provides central management of WebDT signage appliances as media players, and automates the design and distribution of a wide variety of multimedia file format. With the WebDT Content Manager, the message to be played is assembled, scheduled, and delivered for dynamic playback over a network of appliances using standard file formats and protocols.

#### Feature Highlights:

- Groups and Players
- Media Management
- Ticker
- Multiple-zones
- Preset Templates
- Playlists
- Scheduling
- Urgent Casts
- System Management
- Reporting
- Auto Recovery



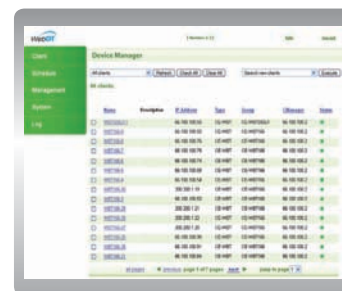
### WebDT Device Manager

WebDT Device Manager offers comprehensive management, and provides a web browser interface fronting a database management system which supports a network of WebDT signage appliances over the LAN, WAN, or wireless networks.

The WebDT Device Manager utilizes "push and pull" technology to interact with remote appliances, allowing system administrators to inventory hardware, update applications and registry entries, shutdown/reboot/wake-up devices, update system firmware and software, along with access to advanced logging and scheduling capabilities.

#### Feature Highlights:

- Client Inventory
- History and Job Manager
- Scheduling
- Group Management
- Appliance Shutdown
- WakeOnLan
- Image Management
- File Package
- BIOS Management
- Database Support



## Comparison Chart

Products	Item	SA1000	SA2000
<b>System</b>	<b>Processor</b>	1.5GHz x86 processor	AMD Sempron™ 1.6GHz/ 2GHz, or AMD Turion™ 2.1GHz Dual-Core processor
	<b>RAM</b>	1GB (DDR II SODIMM x 1)	1GB or 2GB (DDR II SODIMM x 1)
	<b>Storage</b>	4GB, 8GB, or 16GB Flash	4GB, 8GB or 16GB Flash, or 120GB HDD
	<b>Display</b>	Up to 1920 x1080	Up to 1920 x 1080
	<b>Operating System</b>	Microsoft® Windows® XP Embedded	
	<b>Wireless Connection</b>	10/100Mb BaseT LAN/ WiFi 802.11 a/b/g	
	<b>I/O Ports</b>	DVI-I (1) Audio jack (3) USB port (4) RJ45 connector for Ethernet (1) DC-in jack (1) ----- <b>Optional:</b> WiFi Dipole antenna (1)	VGA (1) HDMI (1) Audio jack (3) USB port (2) RJ45 connector for Ethernet (1) DC-in jack (1) S-Video input (1) Composite video-in (1) RS232 COM port (1) ----- <b>Optional:</b> WiFi Dipole antenna (1)
<b>Mechanical</b>	<b>Dimension (H x W x D)</b>	1.7" x 5.5" x 5.1"	2" x 5.5" x 6.5"
	<b>Weight</b>	1.2 lbs/ 544g	2.97 lbs/ 1344g
<b>Environmental</b>	<b>Regulatory</b>	FCC Class B, CE, C-tick, RoHS compliant	
	<b>Operating Temperature</b>	0° – 40°C	
	<b>Humidity</b>	0% – 90% non-condensing	

\* Specifications subject to change without notice.

## Applications:

The WebDT Signage Appliance is ideal for the following applications:

- Retail
- Hospitality
- Casino/ Entertainment
- Government
- Transportation
- Kiosk
- Healthcare
- Finance

